

DESIGNER
SHOWROOM
SAMPLE PROGRAM

Nourison

2020-2021



CONTENTS



3	ALDORA	17	DIVINE
5	ARTWORKS	19	ELAN
6	CHRISTOPHER GUY	22	ELLORA
9	CALVIN KLEIN CK17 PRAIRIE	23	LUCENT
10	CALVIN KLEIN CK33 MESA	24	OCEAN
11	CALVIN KLEIN CK890 PRETORIA	27	PLATEAU
12	CALVIN KLEIN CK920 KATHMANDU	28	PRISMATIC
13	CALVIN KLEIN CK930 AGADIR	31	SILK ELEMENTS
14	CALVIN KLEIN CK940 RIVERSTONE	33	SILK SHADOWS
15	CALVIN KLEIN CK960 NORTHWEST	34	TIMELESS
16	CALVIN KLEIN CK990 ABYSS	36	TWILIGHT

ALDORA

An antique-inspired collection is hand knotted for a luxurious silk-like pile with extravagant texture and tone that exudes a spectacular sumptuousness.

BAMBOO-EXTRUDED SILK-LIKE FIBER | HAND KNOTTED

SIZES AVAILABLE

2 ft x 3 ft	8 ft 6 in. x 11 ft 6 in.
5 ft 6 in. x 8 ft	9 ft 9 in. x 13 ft 9 in.
7 ft 9 in. x 9 ft 9 in.	

METRIC

0.61m x 0.91m	2.59m x 3.51m
1.68m x 2.44m	2.97m x 4.19m
2.36m x 2.97m	

CUSTOM SIZES AVAILABLE



ALD01 SILVER



ALD03 OPAL GREY



ALD06 MOCHA



ALDORA

An antique-inspired collection is hand knotted for a luxurious silk-like pile with extravagant texture and tone that exudes a spectacular sumptuousness.

BAMBOO-EXTRUDED SILK-LIKE FIBER | HAND KNOTTED

SIZES AVAILABLE

2 ft x 3 ft	8 ft 6 in. x 11 ft 6 in.
5 ft 6 in. x 8 ft	9 ft 9 in. x 13 ft 9 in.
7 ft 9 in. x 9 ft 9 in.	

METRIC

0.61m x 0.91m	2.59m x 3.51m
1.68m x 2.44m	2.97m x 4.19m
2.36m x 2.97m	

CUSTOM SIZES AVAILABLE



ALD07 PEWTER



ALD08 AUBERGINE



ALD09 SAND



ARTWORKS

A modern collection, with rich abstract colors, that works in any room in the home.

80% NZ WOOL & 20% LUXCELLE | LOOM WOVEN

SIZES AVAILABLE

2 ft x 3 ft	8 ft 6 in. x 11 ft 6 in.
5 ft 6 in. x 8 ft	9 ft 6 in. x 12 ft 6 in.
7 ft 9 in. x 9 ft 9 in.	

CUSTOM SIZES AVAILABLE

METRIC

0.61m x 0.91m	2.59m x 3.51m
1.68m x 2.44m	2.90m x 3.81m
2.36m x 2.97m	



ATW01 SLATE MULTI



ATW02 BLUE/GREY



ATW03 SLATE/BRICK



ATW05 IVORY/NAVY



Soft neutral tones seem to flow across the surface of these wool and silk rug, creating a feeling of peaceful movement.

NZ WOOL & SILK | HAND KNOTTED

STANDARD SIZES

8 ft x 10 ft (2.44m x 3.05m)
9 ft x 12 ft (2.74m x 3.66m)
10 ft x 14 ft (3.05m x 4.27m)

SPECIAL ORDER SIZES

6 ft Round (1.83m Round)
6 ft x 9 ft (1.83m x 2.74m)
8 ft Round (2.44m Round)
8 ft Square (2.44m Square)

SPECIAL ORDER SIZES

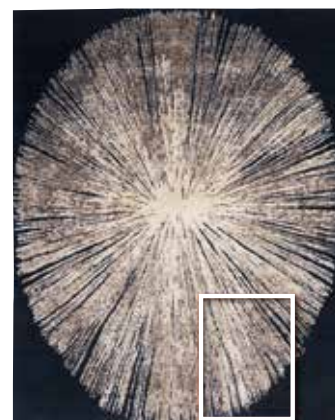
10 ft Round (3.05m Round)
12 ft Round (3.66m Round)
12 ft Square (3.66m Square)



CGS06 AJMER



CGS21 NOIR



CGS22 CHIC GREY



CGS25 BIRCH



Soft neutral tones seem to flow across the surface of these wool and silk rug, creating a feeling of peaceful movement.

NZ WOOL & SILK | HAND KNOTTED

STANDARD SIZES

8 ft x 10 ft (2.44m x 3.05m)
9 ft x 12 ft (2.74m x 3.66m)
10 ft x 14 ft (3.05m x 4.27m)

SPECIAL ORDER SIZES

6 ft Round (1.83m Round)
6 ft x 9 ft (1.83m x 2.74m)
8 ft Round (2.44m Round)
8 ft Square (2.44m Square)

SPECIAL ORDER SIZES

10 ft Round (3.05m Round)
12 ft Round (3.66m Round)
12 ft Square (3.66m Square)



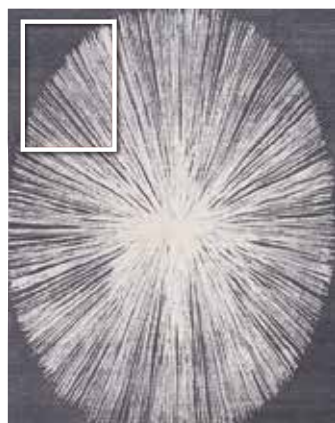
CGS11 SEA SAND



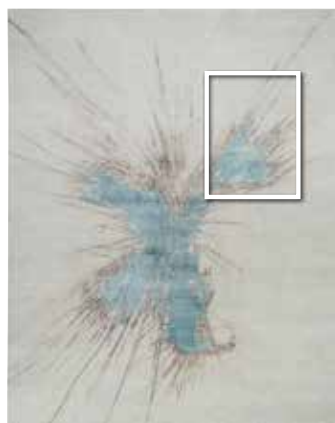
CGS18
MEDITERRANEAN
SAND



CGS21 CHIC GREY



CGS24
PALOMA GREY



WOOL & BAMBOO LINEN

Ranging from abstracts to floral and geometric patterns to simple, classic pieces that focus attention on natural materials.

NZ WOOL & BAMBOO LINEN | HAND KNOTTED

STANDARD SIZES

8 ft x 10 ft (2.44m x 3.05m)
9 ft x 12 ft (2.74m x 3.66m)
10 ft x 14 ft (3.05m x 4.27m)

SPECIAL ORDER SIZES

6 ft Round (1.83m Round)
6 ft x 9 ft (1.83m x 2.74m)
8 ft Round (2.44m Round)
8 ft Square (2.44m Square)

SPECIAL ORDER SIZES

10 ft Round (3.05m Round)
12 ft Round (3.66m Round)
12 ft Square (3.66m Square)



CGW05 MOCHA



CGW16 SILVER



CGW16 EGGSHELL



CALVIN KLEIN

CK17 PRAIRIE

This collection of special skin rugs brings the beauty of nature inside. The cowhides' contrasting hues and alternating hair direction add to the design and sophistication of this unique all-natural collection.

NATURAL HAIR ON HIDE | HAND MADE



PRA1 AMBER



SIZES AVAILABLE

2 ft x 3 ft
4 ft x 6 ft
5 ft 6 in. x 7 ft 5 in.
8 ft x 10 ft
9 ft x 12 ft
10 ft x 14 ft

METRIC

0.61m x 0.91m
1.22m x 1.83m
1.68m x 2.26m
2.44m x 3.05m
2.74m x 3.66m
3.05m x 4.27m

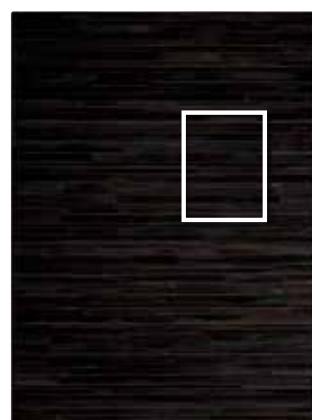
CUSTOM SIZES AVAILABLE



PRA1 BEIGE



PRA1 BLACK



PRA1 SABLE



PRA1 SILVER



CALVIN KLEIN

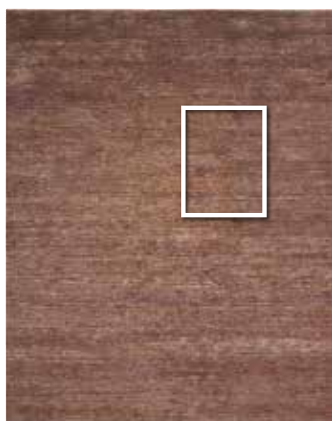
CK33 MESA

A mix of eco-friendly fibers creates a textured aesthetic. This handwoven collection features hand-dyed yarns in clean, neutral tones.

41% RAYON, 38% JUTE, 16% COTTON, 5% POLYESTER | HAND MADE



MSA01 AMBER



SIZES AVAILABLE

2 ft x 3 ft
2 ft 3 in. x 7 ft 5 in. Runner
4 ft x 6 ft
5 ft 6 in. x 7 ft 5 in.
8 ft x 10 ft
9 ft x 12 ft
10 ft x 14 ft

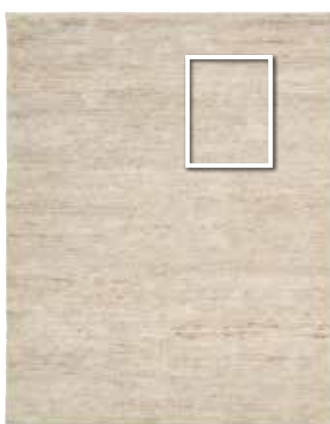
METRIC

0.61m x 0.91m
0.69m x 2.26m Runner
1.22m x 1.83m
1.68m x 2.26m
2.44m x 3.05m
2.74m x 3.66m
3.05m x 4.27m

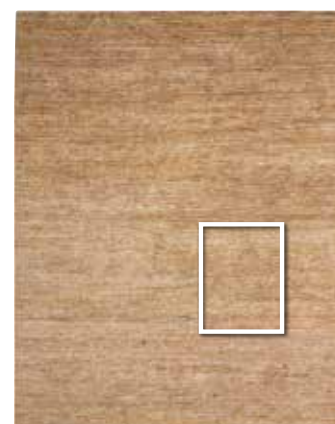
CUSTOM SIZES AVAILABLE



MSA01 BARITE



MSA01 FOSSIL



MSA01 GYPSUM



MSA01 HEMATITE



CALVIN KLEIN

CK890 PRETORIA

The Calvin Klein Pretoria collection brings an inviting, lush softness into your home. The neutral tones match any décor and the mosaic pattern with subtle sheen gives any room a clean, modern accompaniment.

100% MOHAIR WOOL | HAND WOVEN

SIZES AVAILABLE

2 ft x 3 ft	9 ft x 12 ft
5 ft 6 in. x 8 ft	10 ft x 14 ft
8 ft x 10 ft	

METRIC

0.61m x 91m	2.74m x 3.66m
1.68m x 2.44m	3.05m x 4.27m
2.44m x 3.05m	



CK890 BEIGE



CK890 BLUE



CK890 IVORY



CK890 STONE



The Calvin Klein Kathmandu collection invites the outdoors into your living room or bedroom with hand-knotted natural fibers for a textured feel and soft earth tones that complement any living space.

51% JUTE, 49% WOOL | HAND KNOTTED

SIZES AVAILABLE

2 ft x 3 ft	8 ft x 10 ft
2 ft 3 in. x 7 ft 5 in. Runner	9 ft x 12 ft
4 ft x 6 ft	10 ft x 14 ft
5 ft 6 in. x 7 ft 5 in.	

METRIC

0.61m x 0.91m	2.44m x 3.05m
0.69m x 2.26m	2.74m x 3.66m
1.22m x 1.83m	3.05m x 4.27m
1.68m x 2.26m	

CUSTOM SIZES AVAILABLE



CK920 GREY



CK920 NATURAL



CALVIN KLEIN

CK930 AGADIR

The Calvin Klein Agadir collection features plush, Berber rugs that can easily serve as the unifying component of any room. The neutral gradient shades complement a wide range of furniture styles from traditional woods, to modern metals and glass.

61% WOOL, 39% RAYON | HAND KNOTTED

SIZES AVAILABLE

2 ft x 3 ft	9 ft x 12 ft
5 ft 3 in. x 7 ft 3 in.	10 ft x 14 ft
8 ft x 10 ft	

METRIC

0.61m x 91m	2.74m x 3.66m
1.60m x 2.21m	3.05m x 4.27m
2.44m x 3.05m	

CUSTOM SIZES AVAILABLE



CK930 BEIGE



CK930 SILVER



CALVIN KLEIN minimalist style meets maximalist texture in the Riverstone Collection. These area rugs start with wool that is dyed in soft neutrals, and then expertly hand-woven in a large-loop pebble weave.

100% WOOL | HAND WOVEN

SIZES AVAILABLE

2 ft x 3 ft	8 ft x 10 ft
4 ft x 6 ft	9 ft x12 ft
5 ft 3 in. x 7 ft 5 in.	10 ft x14 ft

METRIC

0.61m x 0.91m	2.44m x 3.05m
1.22m x 1.83m	2.74m x 3.66m
1.60m x 2.26m	3.05m x 4.27m

CUSTOM SIZES AVAILABLE



CK940 GREY IVORY



CK940 IVORY



CK940 MOCHA



CALVIN KLEIN

CK960 NORTHWEST

The Northwest Collection was inspired by the rugged, rustic beauty of America’s northwest. These 100% leather, hair-on-hide area rugs are meticulously crafted with patchwork patterns and cross-stitch details.

100% LEATHER | HAND MADE

SIZES AVAILABLE

2 ft x 3 ft 9 ft x 12 ft
5 ft 3 in. x 7 ft 5 in. 10 ft x 14 ft
8 ft x 10 ft

METRIC

0.61m x 0.91m 2.74m x 3.66m
1.60m x 2.26m 3.05m x 4.27m
2.44m x 3.05m

CUSTOM SIZES AVAILABLE



CK960 BEIGE



CK960 GREY



CK960 IVORY



CALVIN KLEIN

CK990 ABYSS

Bring a touch of modern minimalist refinement to any space with an Atlantic area rug from the CALVIN KLEIN Abyss Collection. Each rug is handwoven, adding unique textural variations to the high-low pile.

54% VISCOSE, 34% WOOL, 6% POLYESTER, 5% NYLON, 1% ACRYLIC | HAND WOVEN

SIZES AVAILABLE

2 ft x 3 ft	9 ft x 12 ft
5 ft 3 in. x 7 ft 3 in.	10 ft x 14 ft
8 ft x 10 ft	

METRIC

0.61m x 0.91m	2.74m x 3.66m
1.60m x 2.21m	3.05m x 4.27m
2.44m x 3.05m	

CUSTOM SIZES AVAILABLE



CK990 BLUE



CK990 SAND



CK990 SILVER GREY



DIVINE

Textural and visual appeal are enhanced by the high-low construction and the fiber content of fine wool blended with silk-like Luxcelle™.

31% NZ WOOL & 69% LUXCELLE | HAND KNOTTED

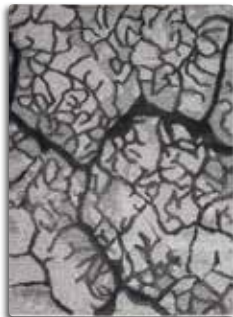
SIZES AVAILABLE

2 ft x 3 ft 8 ft 6 in. x 11 ft 6 in.
5 ft 6 in. x 7 ft 5 in. 9 ft 9 in. x 13 ft 9 in.
7 ft 9 in. x 9 ft 9 in.

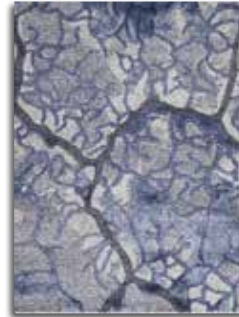
METRIC

0.61m x 0.91m 2.59m x 3.51m
1.68m x 2.26m 2.97m x 4.19m
2.36m x 2.97m

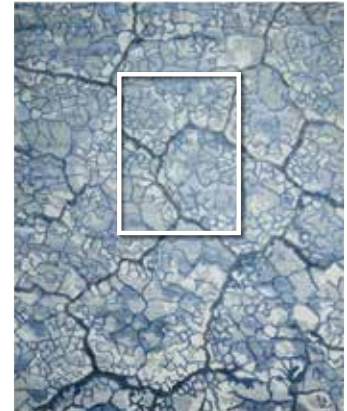
CUSTOM SIZES AVAILABLE



DIV01 CHARCOAL



DIV02 MIST



DIV04 SLATE



DIV05 ASH



DIVINE

Textural and visual appeal are enhanced by the high-low construction and the fiber content of fine wool blended with silk-like Luxcelle™.

31% NZ WOOL & 69% LUXCELLE | HAND KNOTTED

SIZES AVAILABLE

2 ft x 3 ft	8 ft 6 in. x 11 ft 6 in.
5 ft 6 in. x 7 ft 5 in.	9 ft 9 in. x 13 ft 9 in.
7 ft 9 in. x 9 ft 9 in.	

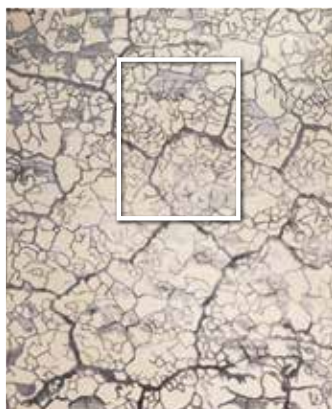
METRIC

0.61m x 0.91m	2.59m x 3.51m
1.68m x 2.26m	2.97m x 4.19m
2.36m x 2.97m	

CUSTOM SIZES AVAILABLE



DIV06 IVORY



DIV07 SMOKE



DIV08 SAND



DIV09 SAND STORM



ELAN

Soft neutral colors bring fresh, modern appeal to the traditional tribal patterns that give these rugs their special beauty.

71% WOOL & 29% BAMBOO-EXTRUDED SILK-LIKE FIBER | HAND KNOTTED



ELN01 IVORY



SIZES AVAILABLE

2 ft x 3 ft
5 ft 6 in. x 8 ft
7 ft 9 in. x 9 ft 9 in.
8 ft 6 in. x 11 ft 6 in.
9 ft 9 in. x 13 ft 9 in.

METRIC

0.61m x 0.91m
1.68m x 2.44m
2.36m x 2.97m
2.59m x 3.51m
2.97m x 4.19m



ELN02 LIGHT GREY



ELN03 SILVER



ELN04 GOLD



ELN05 GREY



ELLORA

Hand knotted with a high-performance wool blend, these alluring area rugs have a soft, thick texture you will find irresistible.

55% RAYON, 27% WOOL, 11% COTTON, 6% POLYESTER, 1% OTHER | HAND KNOTTED

SIZES AVAILABLE

2 ft x 3 ft	8 ft 6 in. x 11 ft 6 in.
5 ft 6 in. x 7 ft 5 in.	9 ft 9 in. x 13 ft 9 in.
7 ft 9 in. x 9 ft 9 in.	

CUSTOM SIZES AVAILABLE

METRIC

0.61m x 0.91m	2.59m x 3.51m
1.68m x 2.29m	2.97m x 4.19m
2.36m x 2.97m	



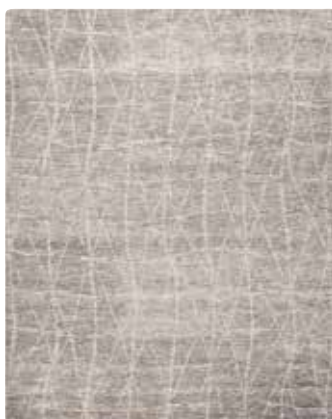
ELL01 BLUE



ELL01 IVORY GREY



ELL02 SAND



ELL02 SKY



ELLORA

Hand knotted with a high-performance wool blend, these alluring area rugs have a soft, thick texture you will find irresistible.

NZ WOOL, BAMBOO SILK, COTTON | HAND KNOTTED

SIZES AVAILABLE

2 ft x 3 ft	8 ft 6 in. x 11 ft 6 in.
5 ft 6 in. x 7 ft 5 in.	9 ft 9 in. x 13 ft 9 in.
7 ft 9 in. x 9 ft 9 in.	

CUSTOM SIZES AVAILABLE

METRIC

0.61m x 0.91m	2.59m x 3.51m
1.68m x 2.29m	2.97m x 4.19m
2.36m x 2.97m	



ELL02 STONE



ELL03 SLATE



ELL04 GRAPHITE



LUCENT

Hand craftsmanship shines through in the rich abrash color effects on hand-knotted natural fibers, blending the vintage allure of a Tibetan rug.

BAMBOO-EXTRUDED SILK-LIKE FIBER | HAND KNOTTED

SIZES AVAILABLE

2 ft x 3 ft	7 ft 9 in. x 9 ft 9 in.
2 ft 3 in. x 8 ft Runner	8 ft 6 in. x 11 ft 6 in.
3 ft 9 in. x 5 ft 9 in.	9 ft 9 in. x 13 ft 9 in.
5 ft 6 in. x 7 ft 6 in.	

METRIC

0.61m x 0.91m	2.36m x 2.97m
0.69m x 2.44m	2.59m x 3.51m
1.14m x 1.75m	2.97 x 4.19 m
1.68m x 2.29m	

CUSTOM SIZES AVAILABLE



LCN01 SKY



LCN02 FLINT



LCN03 DOVE



LCN04 COAL



LUCENT

Hand craftsmanship shines through in the rich abrash color effects on hand-knotted natural fibers, blending the vintage allure of a Tibetan rug.

BAMBOO-EXTRUDED SILK-LIKE FIBER | HAND KNOTTED

SIZES AVAILABLE

2 ft x 3 ft	7 ft 9 in. x 9 ft 9 in.
2 ft 3 in. x 8 ft Runner	8 ft 6 in. x 11 ft 6 in.
3 ft 9 in. x 5 ft 9 in.	9 ft 9 in. x 13 ft 9 in.
5 ft 6 in. x 7 ft 6 in.	

METRIC

0.61m x 0.91m	2.36m x 2.97m
0.69m x 2.44m	2.59m x 3.51m
1.14m x 1.75m	2.97 x 4.19 m
1.68m x 2.29m	

CUSTOM SIZES AVAILABLE



LCN05 PEARL



LCN06 DUSK



LCN07 SILVER RED



OCEAN

Ocean's soft and luminous hand-knotted pile and chenille-like texture creates a natural striped effect of shadow and light.

37% WOOL, 33% RAYON, 30% LINEN | HAND KNOTTED



OCP02 PEARL



SIZES AVAILABLE

2 ft x 3 ft

5 ft 6 in. x 7 ft 5 in.

7 ft 9 in. x 9 ft 9 in.

8 ft 6 in. x 11 ft 6 in.

9 ft 9 in. x 13 ft 9 in.

METRIC

0.61m x 0.91m

1.68m x 2.26m

2.36m x 2.97m

2.59m x 3.51m

2.97m x 4.19m

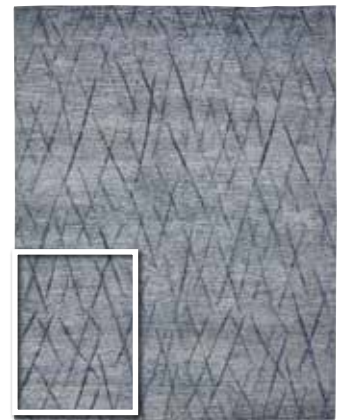
CUSTOM SIZES AVAILABLE



OCP02 ASH



OCP02 INDIGO



OCP02 STONE



OCP02 SURF



OCEAN

Ocean's soft and luminous hand-knotted pile and chenille-like texture creates a natural striped effect of shadow and light.

37% WOOL, 33% RAYON, 30% LINEN | HAND KNOTTED



OCS01 SHELL



SIZES AVAILABLE

2 ft x 3 ft
5 ft 6 in. x 7 ft 5 in.
7 ft 9 in. x 9 ft 9 in.
8 ft 6 in. x 11 ft 6 in.
9 ft 9 in. x 13 ft 9 in.

METRIC

0.61m x 0.91m
1.68m x 2.26m
2.36m x 2.97m
2.59m x 3.51m
2.97m x 4.19m

CUSTOM SIZES AVAILABLE



OCS01 MIST



OCS01 PEBBLE



OCS01 SAND



OCS01 ONYX



OCEAN

Hand craftsmanship shines through in the rich abrash color effects on hand-knotted natural fibers, blending the vintage allure of a Tibetan rug.

37% WOOL, 33% RAYON, 30% LINEN | HAND KNOTTED

SIZES AVAILABLE

2 ft x 3 ft	8 ft 6 in. x 11 ft 6 in.
5 ft 6 in. x 7 ft 5 in.	9 ft 9 in. x 13 ft 9 in.
7 ft 9 in. x 9 ft 9 in.	

CUSTOM SIZES AVAILABLE

METRIC

0.61m x 0.91m	2.59m x 3.51m
1.68m x 2.26m	2.97m x 4.19m
2.36m x 2.97m	



OCP03 CRMCH



OCP03 IVSLT



PLATEAU

The Tibetan-inspired Plateau Collection offers the artisanal look and feel of hand-knotting in low-shed, natural fiber blends and subtle color variations that work with décor ranging from transitional to modern and bohemian.

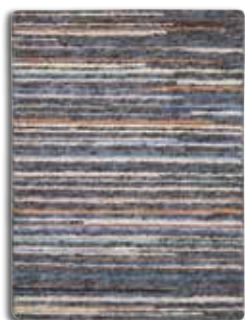
47% WOOL, 38% RAYON, 11% COTTON & 4% OTHER | HAND KNOTTED

SIZES AVAILABLE

2 ft x 3 ft	8 ft 6 in. x 11 ft 6 in.
5 ft 6 in. x 7 ft 5 in.	9 ft 9 in. x 13 ft 9 in.
7 ft 9 in. x 9 ft 9 in.	

METRIC

0.61m x 0.91m	2.59m x 3.51m
1.68m x 2.26m	2.97m x 4.19m
2.36m x 2.97m	



PAE01 BLUE



PAE01 GREY FLAME



PAE01 GREY GREEN



PAE01 IVORY



PRISMATIC

Prismatic's features daring, 3D-like designs, and captivating color palettes for an overall effect that is charismatic.

50% NZ WOOL & 50% LUXCELLE | HAND TUFTED



PRS05 SILVER CLOUD



SIZES AVAILABLE

2 ft x 3 ft*

3 ft 9 in. x 5 ft 9 in.

5 ft 6 in. x 7 ft 5 in.

7 ft 9 in. x 9 ft 9 in.

8 ft 6 in. x 11 ft 6 in.

9 ft 9 in. x 13 ft 9 in.

12 ft x 15 ft*

METRIC

0.61m x 0.91m

1.14m x 1.75m

1.68m x 2.26m

2.36m x 2.97m

2.59m x 3.51m

2.97m x 4.19m

3.66m x 4.57m

*Select designs

CUSTOM SIZES AVAILABLE



PRS08 MULTICOLOR



PRS09 MULTICOLOR



PRS09 SILVER BLUE



PRS10 BLUE GREY



PRISMATIC

Prismatic's features daring, 3D-like designs, and captivating color palettes for an overall effect that is charismatic.

50% NZ WOOL & 50% LUXCELLE | HAND TUFTED

SIZES AVAILABLE

2 ft x 3 ft*	8 ft 6 in. x 11 ft 6 in.
3 ft 9 in. x 5 ft 9 in.	9 ft 9 in. x 13 ft 9 in.
5 ft 6 in. x 7 ft 5 in.	12 ft x 15 ft*
7 ft 9 in. x 9 ft 9 in.	

METRIC

0.61m x 0.91m	2.59m x 3.51m
1.14m x 1.75m	2.97m x 4.19m
1.68m x 2.26m	3.66m x 4.57m
2.36m x 2.97m	

*Select designs

CUSTOM SIZES AVAILABLE



PRS11 GREY MULTI



PRS12 SILVER GREY



PRS14 GREY SLATE



PRS15 BEIGE MULTI



PRISMATIC

Prismatic's features daring, 3D-like designs, and captivating color palettes for an overall effect that is charismatic.

50% NZ WOOL & 50% LUXCELLE | HAND TUFTED

SIZES AVAILABLE

2 ft x 3 ft*	8 ft 6 in. x 11 ft 6 in.
3 ft 9 in. x 5 ft 9 in.	9 ft 9 in. x 13 ft 9 in.
5 ft 6 in. x 7 ft 5 in.	12 ft x 15 ft*
7 ft 9 in. x 9 ft 9 in.	

METRIC

0.61m x 0.91m	2.59m x 3.51m
1.14m x 1.75m	2.97m x 4.19m
1.68m x 2.26m	3.66m x 4.57m
2.36m x 2.97m	

*Select designs

CUSTOM SIZES AVAILABLE



PRS16 SEAFM



PRS17 DENIM



PRS18 MULTI



SILK ELEMENTS

Sumptuous silk accents highlight key design elements creating an ethereal incandescence and a magnificent sophistication that are utterly inspired.

90% NZ WOOL & 10% SILK | LOOM WOVEN

SIZES AVAILABLE

2 ft x 3 ft	8 ft 6 in. x 11 ft 6 in.
2 ft 5 in. x 10 ft	9 ft 9 in. x 13 ft
5 ft 6 in. x 8 ft	12 ft x 15 ft
7 ft 9 in. x 9 ft 9 in.	

METRIC

0.61m x 0.91m	2.59m x 3.51m
0.74m x 3.05m	2.97m x 3.96m
1.68m x 2.44m	3.66m x 4.57m
2.36m x 2.97m	

CUSTOM SIZES AVAILABLE



SKE02 COCOA



SKE03 MOSS



SKE03 SAND



SILK ELEMENTS

Sumptuous silk accents highlight key design elements creating an ethereal incandescence and a magnificent sophistication that are utterly inspired.

90% NZ WOOL & 10% SILK | LOOM WOVEN

SIZES AVAILABLE

2 ft x 3 ft	8 ft 6 in. x 11 ft 6 in.
2 ft 5 in. x 10 ft	9 ft 9 in. x 13 ft
5 ft 6 in. x 8 ft	12 ft x 15 ft
7 ft 9 in. x 9 ft 9 in.	

METRIC

0.61m x 0.91m	2.59m x 3.51m
0.74m x 3.05m	2.97m x 3.96m
1.68m x 2.44m	3.66m x 4.57m
2.36m x 2.97m	

CUSTOM SIZES AVAILABLE



SKE13 BEIGE



SKE14 SAND



SKE22 TAUPE



SILK SHADOWS

Velvety soft with a subtle yet luminous sheen. Designs feature transitional motifs with tasteful colors and tone-on-tone contrasts.

25% NZ WOOL & 75% BAMBOO-EXTRUDED SILK-LIKE FIBER | HAND KNOTTED

SIZES AVAILABLE

2 ft 3 in. x 3 ft	8 ft 6 in. x 11 ft 6 in.
5 ft 6 in. x 7 ft 5 in.	9 ft 9 in. x 13 ft 9 in.
7 ft 9 in. x 9 ft 9 in.	

METRIC

0.61m x 0.91m	2.59m x 3.51m
1.68m x 2.26m	2.97m x 4.19m
2.36m x 2.97m	

*Select designs
CUSTOM SIZES AVAILABLE



SHA02 SIL



SHA10 STERL



SHA16 SILGY



SHA17 SAND



TIMELESS

In depth of color, detail of design and pure artistry, the Timeless Collection recreates the opulence of the past for today's discerning collectors.

80% WOOL & 20% NYLON | LOOM WOVEN

SIZES AVAILABLE

2 ft x 3 ft	8 ft 6 in. x 11 ft 6 in.
5 ft 6 in. x 8 ft	9 ft 9 in. x 13 ft
7 ft 9 in. x 9 ft 9 in.	12 ft x 15 ft

CUSTOM SIZES AVAILABLE

METRIC

0.61m x 0.91m	2.59m x 3.96m
1.68m x 2.44m	3.66m x 4.57m
2.36m x 2.97m	



TML14 BEIGE



TML14 MOCHA



TML15 RED



TIMELESS

In depth of color, detail of design and pure artistry, the Timeless Collection recreates the opulence of the past for today's discerning collectors.

80% WOOL & 20% NYLON | LOOM WOVEN

SIZES AVAILABLE

2 ft x 3 ft	8 ft 6 in. x 11 ft 6 in.
5 ft 6 in. x 8 ft	9 ft 9 in. x 13 ft
7 ft 9 in. x 9 ft 9 in.	12 ft x 15 ft

CUSTOM SIZES AVAILABLE

METRIC

0.61m x 0.91m	2.59m x 3.96m
1.68m x 2.44m	3.66m x 4.57m
2.36m x 2.97m	



TML16 COPPER



TML19 LIGHT BLUE



TML20 OPAL GREY



TWILIGHT

Twilight delivers artful sophistication and a compelling modern look in its array of patterned and abstract designs.

40% NZ WOOL & 60% LUXCELLE | LOOM WOVEN

SIZES AVAILABLE

2 ft x 3 ft	8 ft 6 in. x 11 ft 6 in.
5 ft 6 in. x 8 ft	9 ft 9 in. x 13 ft 9 in.
8 ft Round	12 ft x 15 ft
7 ft 9 in. x 9 ft 9 in.	

METRIC

0.61m x 0.91m	2.59m x 3.51m
1.68m x 2.44m	2.97m x 4.19m
2.44m Round	3.66m x 4.57m
2.36m x 2.97m	

CUSTOM SIZES AVAILABLE



TWI03 IVORY GREY



TWI06 BONE



TWI10 HAZEL



TWI10 IVORY



TWILIGHT

Twilight delivers artful sophistication and a compelling modern look in its array of patterned and abstract designs.

40% NZ WOOL & 60% LUXCELLE | LOOM WOVEN

SIZES AVAILABLE

2 ft x 3 ft	8 ft 6 in. x 11 ft 6 in.
5 ft 6 in. x 8 ft	9 ft 9 in. x 13 ft 9 in.
8 ft Round	12 ft x 15 ft
7 ft 9 in. x 9 ft 9 in.	

METRIC

0.61m x 0.91m	2.59m x 3.51m
1.68m x 2.44m	2.97m x 4.19m
2.44m Round	3.66m x 4.57m
2.36m x 2.97m	

CUSTOM SIZES AVAILABLE



TWI11 FLINT



TWI12 IVORY GREY



TWI14 SMOKE



TWI15 IVORY GREY



TWILIGHT

Twilight delivers artful sophistication and a compelling modern look in its array of patterned and abstract designs.

40% NZ WOOL & 60% LUXCELLE | LOOM WOVEN

SIZES AVAILABLE

2 ft x 3 ft	8 ft 6 in. x 11 ft 6 in.
5 ft 6 in. x 8 ft	9 ft 9 in. x 13 ft 9 in.
8 ft Round	12 ft x 15 ft
7 ft 9 in. x 9 ft 9 in.	

METRIC

0.61m x 0.91m	2.59m x 3.51m
1.68m x 2.44m	2.97m x 4.19m
2.44m Round	3.66m x 4.57m
2.36m x 2.97m	

*Select designs

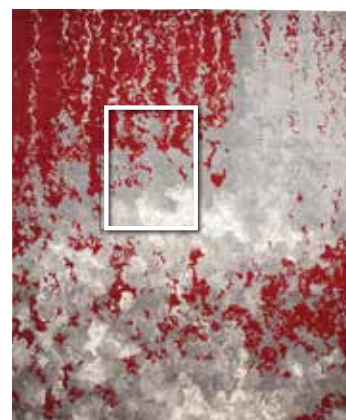
CUSTOM SIZES AVAILABLE



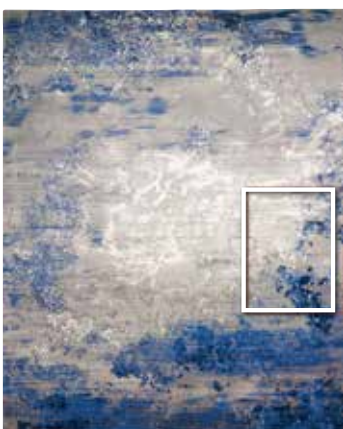
TWI20 GREY BLUE



TWI21 GREY RED



TWI22 BLUE GREY



TWI24 BLUE IVORY



TWILIGHT

Twilight delivers artful sophistication and a compelling modern look in its array of patterned and abstract designs.

40% NZ WOOL & 60% LUXCELLE | LOOM WOVEN

SIZES AVAILABLE

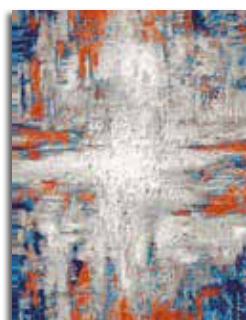
2 ft x 3 ft*	8 ft 6 in. x 11 ft 6 in.
5 ft 6 in. x 8 ft	9 ft 9 in. x 13 ft 9 in.
8 ft Round	12 ft x 15 ft
7 ft 9 in. x 9 ft 9 in.	

METRIC

0.61m x 0.91m	2.59m x 3.51m
1.68m x 2.44m	2.97m x 4.19m
2.44m Round	3.66m x 4.57m
2.36m x 2.97m	

*Select designs

CUSTOM SIZES AVAILABLE



TWI26 IVORY MULTI



TWI27 IVORY BLUE



TWI29 IVORY BLUE





Nourison

Nourison Industries, Inc., US Headquarters

5 Sampson St., Saddle Brook, NJ 07663 | (800) 223-1110 | Fax (201) 368-0739

New York Showroom

New York Showroom | 230 Fifth Avenue, Suite 1305, New York, NY 10001 | (212) 545-1030

Atlanta Showroom

Atlanta Merchandise Mart | 240 Peachtree St. N.W., Space 1L1, 2, Atlanta, GA 30303 | (404) 584-7255

Las Vegas Showroom

World Market Center, Building C | 455 S. Grand Central Pkwy., Suite C112, Las Vegas, NV 89106 | (702) 454-2600

Highpoint Showroom

International Home Furnishings Center (IHFC) | 210 E. Commerce Ave., InterHall IH101 High Point, NC 27260 | (336) 841-6900

Nourison Europe

Freilagerstrasse 39, 8047 Zurich, Switzerland | (+41) 044 401 45 46/47 | Fax (+41) 044 401 45 48

Photos and images in this catalog are for reference only; actual colors and textures may vary.
Rugs shown are of specific size; design details may vary with size changes.

NOURISON.COM

©Nourison 2020 • 0820